



WHAT TO BRING TO CAMPUS

For Sleep

- Pillows
- Pillow Protectors
- XL Twin Comforter
- XL Twin Sheet Sets
- XL Twin Foam Topper
- Mattress Protector
- Extra Blankets
- Alarm Clock

Laundry Supplies

- Laundry Basket
- Laundry Soap/Softener
- Iron & Ironing Board
- Hangers
- Quarters (\$1.00 to wash and \$1.00 to dry)

Shower Supplies

- Shower Caddy
- Towels & Washcloths
- Flip Flops
- Shampoo/Conditioner
- Soap
- Toiletries (Toothbrush, toothpaste, floss etc.)
- Blow Dryer

Cleaning Supplies

- Paper Towels
- Broom & Dustpan
- Vacuum (if you bring carpet)
- Dishpan & Soap
- Disinfecting Wipes
- Air Fresheners (**NO CANDLES!**)

When you arrive, you'll find your room equipped with

- Desk chair
- Bed and mattress
- Closet and/or chest of drawers
- Desk with hutch, central drawer, and shelves
- Internet access – **(all halls are wireless but for faster connection you can bring a Ethernet Cord to connect directly)**
- Cable access – **(must bring coaxial cord)**
 - TV that supports a Clear QAM tuner required

Approximate room dimensions

Exact rooms sizes are not available.

- Shiple: 12 feet by 15 feet
- Holden: 12 feet by 16 feet
- Quads: 13 feet by 16 feet

School/Room Supplies

- Laptop/Computer
- Printer, Ink, Paper
- USB Drive
- Computer Lock
- Desk Supplies (Pens, pencils, lamp, ect.)
- Planner/Calendar
- Calculator
- Water Bottle
- Dishes, Glasses & Silverware
- Can Opener
- Throw Rugs or other carpeting
- Shelves or crates for storage

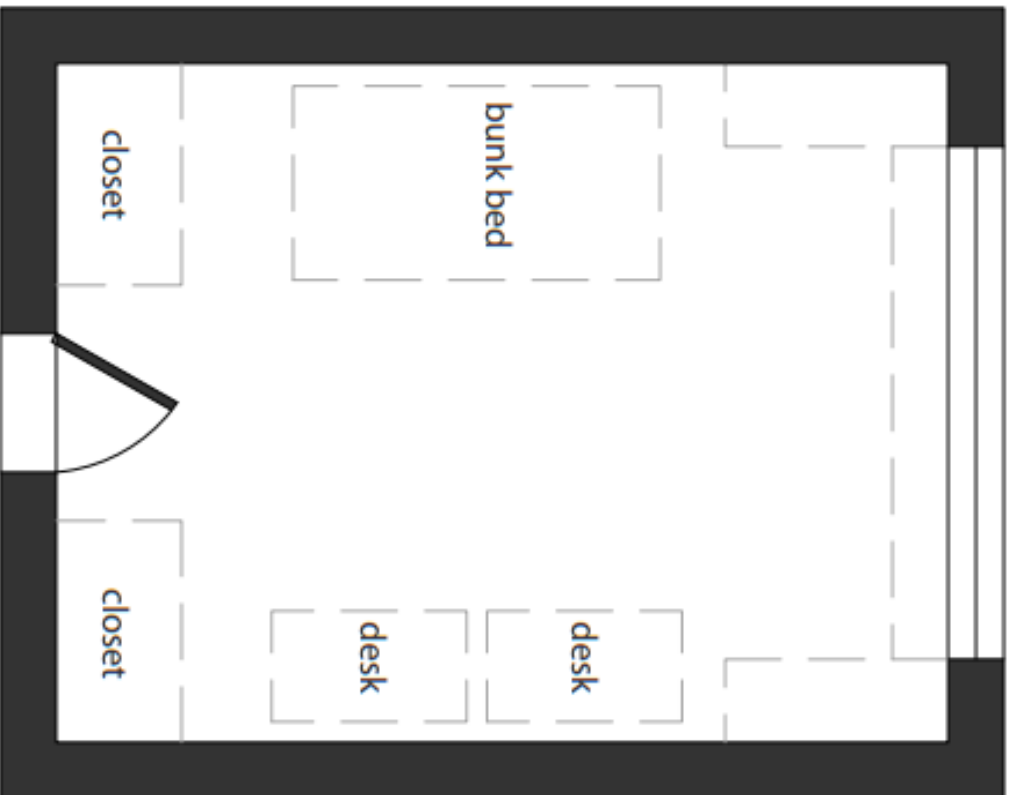
Allowable electrical appliances

- Small lamps
- Stereos (less than 100 watts)
- Fan
- Digital Television and DVD player
- Ethernet Cord- Faster Internet Access
- Small refrigerator (five cubic feet or less and no internal light) See web site for additional info. www.udmercy.edu/reslife
- Small microwave 700 watts or less
- Power strip with surge protector
- Coffee pot with automatic shut off
- Iron with automatic shut off and Ironing Board
- Computer (These are also available on campus for student use)
- 2 Extension cords per room (UL approved) (<6 feet)

What to leave at home

- Broilers
- Candles/Candle Warmers
- Crock pots
- Drug Paraphernalia
- Electric blankets
- Electric frying pans
- Electric space heaters
- George Foreman
- Grills, griddles
- Halogen bulbs/Lamps
- Heating coils
- Heat fans, ceramic heaters, etc.
- Hookahs
- Hot plates
- Incense/potpourri burner
- Five arm plastic floor lamp
- Non BBG, Inc. lofts (including homemade)
- Personal air conditioners
- Pets, other than fish (<10 gallon aquarium)
- Rice cookers
- Sandwich makers
- Sun lamps
- Space Heaters
- Toasters, toaster ovens
- Weapons
- Analog/Tube Television

If you have any questions, call
the Office of Residence Life at 313- 993-1230.



Shiple Residence Hall Layout

Area: 196 square feet

Drawn by: L.S.

